



5280 Associates

WEALTH MANAGEMENT

**COMPREHENSIVE
FINANCIAL PLANNING**

5280 ASSOCIATES

5280associates.com
303 730 1951

MAIN OFFICE

501 S Cherry St Ste 490
Denver CO 80246

NORTH OFFICE

1333 W 120th Ave Ste 100
Westminster CO 80234

MEET OUR TEAM

5280 Associates is comprised of a group of professionals who strive to bring you the best service possible. Below, you will find our staff's specialties, interests, and contact information.

Wealth Advisors



Chad Aaberg, FIC · Owner and Senior Wealth Advisor

Specialties: Financial planning, retirement planning, investment advice, and corporate executive wealth management.

Interests: Spending time with family, watching football, listening to sports radio and exercising.

303 730 1951 x205 · chad@5280associates.com



Nate Wangerin, FIC · Owner and Senior Wealth Advisor

Specialties: Retirement planning and estate analysis.

Interests: Enjoys watching his kids play soccer, lacrosse and other youth sports and spending time running, camping, hiking and skiing in Colorado's outdoors.

303 730 1951 x204 · natew@5280associates.com



Scott Huelskamp, CFP® · Owner and Senior Wealth Advisor

Specialties: Financial planning for families, retirement planning, investment advice, and estate analysis.

Interests: Enjoys time with family, continuing to play golf after pro years, skiing and camping.

303 730 1951 x203 · scott@5280associates.com



Nathaniel Chapman, CFP® · Owner and Senior Wealth Advisor

Specialties: Comprehensive Financial Planning, retirement planning and investment analysis.

Contact for: All service requests like trading, money movement, account information, etc.

Interests: Enjoys spending time with his wife and family, skiing, fishing, camping and all other activities Colorado has to offer.

303 730 1951 x209 · natec@5280associates.com

Operations

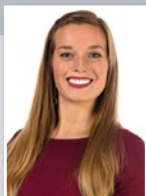


Beth Nickodemus · Operations Manager

Responsible for: Overseeing 5280 Associates' operations.

Interests: Traveling, hiking and going on family adventures with her husband, two sons, and dog, Hank.

303 730 1951 x207 · beth@5280associates.com



Bethany Brewer · Client Support Specialist

Responsible for: Supporting a high level of service throughout the practice.

Interests: Classical music, skiing, hiking, running, and being outdoors.

303 730 1951 x208 · bethany@5280associates.com

Operations Continued



Marnie Griffin · Office Manager

Contact for: General information

Interests: Music, walking, and cooking

303 730 1951 x200 · marnie@5280associates.com

Financial Planning and Investment Management



Ted Kouba, CFP®, MBA · Director of Financial Planning & Investment Operations

Specialties: Financial planning, portfolio analysis and allocation and Social Security.

Contact for: Questions regarding completed financial plans and Social Security.

Interests: Biking, skiing and scuba diving with his wife and three children.

303 730 1951 x206 · ted@5280associates.com



Patrick O'Brien · Implementation Manager

Contact for: New account setup, account transfers and financial planning implementation items.

Interests: Enjoys spending time with his fiancée, Hilary, and their mini-farm including two cats, two dogs, and four chickens. They enjoy living the homesteading culture and are working towards being more self sufficient with gardening and raising livestock. Patrick also enjoys the outdoors and regularly goes camping, hiking, and loves to explore national parks. In his down time, he also likes to watch basketball and listen to his favorite podcasts.

303 730 1951 x214 · patrick@5280associates.com



Ann Harbin · Special Projects Manager for Financial Planning

Contact for: Financial Planning Program Meeting Scheduling, Billing, and New Account Applications

Interests: Outside of 5280, Ann's time is filled to the brim laughing with her husband, David, playing with or singing to their baby girl, Grace, and the decorating of their new house in Thornton. Occasionally she finds a moment to read a book, keep in touch with friends and family across the country, volunteer at her church, or binge-watch the Great British Baking show on Netflix.

303 730 1951 x100 · ann@5280associates.com

Events and Outreach



Kirsten Painter · Marketing Manager

Contact for: Event registration and information, and client communications.

Interests: Snowboarding, scuba diving, camping, game nights with her family, and going on adventures with her fiancé, Tyler, and their dog, Merle.

303 730 1951 x212 · kirsten@5280associates.com

COMPREHENSIVE FINANCIAL PLANNING

The 5280 Associates financial planning process begins with an initial analysis. Then, we keep your financial plan on track with regular ongoing meetings.

Initial Analysis



INTRODUCTION
Meet and Greet



PROPOSAL AND AGREEMENT
Agree on services and fees



GATHER DATA
Statement and info collection



STRATEGY CALL
Specific questions after document review



ANALYSIS
Expert examination of your plan



PRESENTATION*
Your initial findings and recommendations

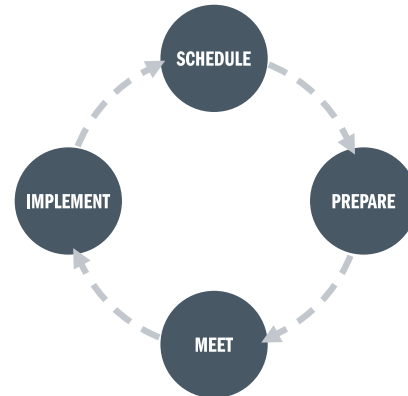
Initial Implementation

Put initial recommendations in place with our assistance*



Ongoing Advice

We meet every six months to keep you on track



*Implementation of your written recommendations will be done separate from the Financial Planning Services. You will determine whether and how to implement recommendations.

For more specific information on services and associated fees, see pages 5-7.

OR

INVESTMENT MANAGEMENT ONLY

If you prefer 5280 Associates to just manage your investments, a \$250,000 household minimum is required. See page 7 for fee structures and details.

1-2 hour meeting



GATHER DATA
Statement and info collection



DEVELOP SOLUTION
Select strategy



IMPLEMENT SOLUTION
Put account or product in place



REVIEW
Annual account review

TOPICS COVERED IN FINANCIAL PLANNING

We conduct an analysis of your financial situation for a transparent, flat fee. Below you will find a list of topics we may cover in this analysis.

General Financial Planning

- Update and prioritize goals
- Update account values
- Establish fundamental goals
- Account consolidation
- Family updates and changes
- 3rd party referrals (CPA, mortgage, etc.)
- Business ownership changes
- Credit report analysis
- Large purchase decision making
- Real estate review
- Debt refinance check

Investment Management

- Semi-annual review and rebalance
- Performance review
- Fee check
- External account analysis
- Employer retirement plan allocation review
- Stock Option Review

Cash Flow Planning

- Debt management (payoff analysis and tracking)
- Budget and expense review
- Cash flow analysis
- Tax and liquidity planning
- Net worth review

Retirement Tracking and Planning

- Future projections
- Savings amount
- Money Guide Pro
- Monte Carlo analysis
- Retirement income creative strategy
- Social security planning
- Rental property income review
- Required distribution withdrawals
- Required distribution planning strategy

Insurance Analysis

- Basic risk analysis
- Life insurance review
- Disability insurance review
- Long-term care insurance review
- Employer benefits review
- Property and casualty insurance review
- Umbrella insurance review
- Health insurance review
- Real estate rental insurance
- Medicare/Medicaid advice

College Planning

- Savings amount determination
- Account selection
- Investment allocation
- Tax efficiency

Tax Analysis

- General change in tax situation
- Health savings account option
- Employer plan contribution changes
- Roth conversions
- Roth contribution limit check
- Qualified charitable donations
- Planned giving (charitable) analysis
- Tax loss harvesting
- Appreciated asset charitable donations

Estate Planning

- Beneficiary review of all accounts
- Ownership review of all accounts
- Tax efficient wealth transfer review
- Estate law change discussion
- Trust review
- Health directive review
- Power of attorney review

WHAT WE CHARGE

The cost to create and maintain your financial plan depends on the level of complexity. The more complex your circumstances are, the more time our staff will spend working to maintain your plan. In every case, the fee is flat, transparent, and agreed upon at the onset.

Mountain

INITIAL ANALYSIS
10-20 hours

ONGOING MEETINGS
1-2 annually

ONGOING TIME SPENT
10 hours per year



\$2,400 (\$200 per month)



Aspen

INITIAL ANALYSIS
20-30 hours

ONGOING MEETINGS
2 annually

ONGOING TIME SPENT
15 hours per year

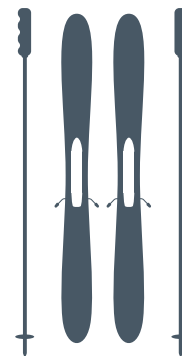
\$3,600 (\$300 per month)

Alpine

INITIAL ANALYSIS
30+ hours

ONGOING MEETINGS
2+ annually

ONGOING TIME SPENT
20+ hours per year



\$4,800+ (\$400+ per month)

IMPLEMENTING YOUR PLAN – WE CAN HELP!

5280 Associates is here to guide you in the implementation of a plan that meets your unique, individual needs.

Investment Management Services		
5280 Associates can help you invest. An annual percentage of assets under management fee applies. This covers advice on account selection based on your risk tolerance, establishing the account, ongoing management, and review meetings.		
	Bedrock	Elevation
	Foundational Portfolios	Specialty Portfolios*
	Managed allocations of low cost, diversified funds from multiple companies	Money manager portfolios with specialty objectives
Less than \$250,000	1.20%	1.55%
\$250,000	1.00%	1.35%
\$500,000	0.95%	1.25%
\$1,000,000	0.85%	1.10%
\$3,000,000	0.75%	1.00%
\$5,000,000	0.70%	0.85%
\$10,000,000	0.65%	0.60%

*Additional manager fee applies

The minimum investment for clients not enrolled in our Financial Planning Program is \$250,000 per household.

There is no minimum for Financial Planning clients.

Protection Services			
During financial planning, we may recommend you implement protection products. We can help you establish those products.			
	Life Insurance	Disability Income Insurance and Long-Term Care Insurance	Fixed and Variable Annuities
Initial Guidance	Coverage Selection Application Underwriting	Coverage Selection Application Underwriting	Product Selection Income Strategies
Account Maintenance and Product Service	Claims Beneficiary changes Billing Changes Withdrawals	Claims Billing Changes	Allocation changes Beneficiary changes Deposits Withdrawals
Annual Account Review	As needed	As needed	As needed
Fees	*Commission-based costs	*Commission-based costs	*Commission-based costs

*Fees are incorporated into client premium payment.

Review the product contract or prospectus; or, if you have a brokerage or managed account, see the fee schedule you received when you established the account for specific information about fees and expenses. For detailed information about fees and charges for investment advisory services, review the applicable managed account ADV brochure.

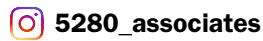
Other Planning Needs
5280 Associates is happy to provide referrals to other professionals who can assist with tax preparation, legal work, insurance, financing, and real estate.

Resources

General Office Contact Information

Main Office • 501 S Cherry St Ste 490 • Denver CO 80246
North Office • 1333 W 120th Ave Ste 100 • Westminster CO 80234
info@5280associates.com • 303 730 1951 x200
f: 720 571 2990 • tf: 855 942 4230

www.5280associates.com



IMPORTANT: Advisory Person(s) may use proprietary financial planning tools, calculators and third-party tools and materials (“Third-Party Materials”) to develop your financial planning recommendations. The projections or other information generated Third-Party Materials regarding the likelihood of various investment outcomes are hypothetical in nature, do not reflect actual investment results, and are not guarantees of future results. Results may vary with each use and over time. 5280 Associates and its advisors do not provide legal, accounting or tax advice. Consult your attorney and or tax professional regarding these situations.

The return assumptions in Third-Party Materials are not reflective of any specific product, and do not include any fees or expenses that may be incurred by investing in specific products. The actual returns of a specific product may be more or less than the returns used. It is not possible to directly invest in an index. Financial forecasts, rates of return, risk, inflation, and other assumptions may be used as the basis for illustrations. They should not be considered a guarantee of future performance or a guarantee of achieving overall financial objectives. Past performance is not a guarantee or a predictor of future results of either the indices or any particular investment. Investing involves risks, including the possible loss of principal.

Investment advisory services are offered through 5280 Associates, a registered investment adviser. This material, in and of itself, does not create an investment advisory relationship subject to the Investment Advisers Act of 1940.

The purpose of the report is to illustrate how accepted financial and estate planning principles may improve your current situation. The term “plan” or “planning,” when used within this report, does not imply that a recommendation has been made to implement one or more financial plans or make a particular investment. You should use this Report to help you focus on the factors that are most important to you. Review the Financial Planning Disclosure Document and the Financial Planning Agreement for a full description of the services offered and fees.

THRIVENT IS THE MARKETING NAME FOR THRIVENT FINANCIAL FOR LUTHERANS. Investment advisory services offered through 5280 Associates., a registered investment adviser and a subsidiary of Thrivent. SEC registration does not constitute an endorsement of the firm by the Commission nor does it indicate that the adviser has attained a particular level or skill or ability. Advisory services available through investment adviser representatives only. Clients will separately engage a broker-dealer or custodian to safeguard their investment advisory assets. Review the Thrivent Advisor Network ADV Disclosure Brochure and Wrap-Fee Program Brochure for a full description of services, fees and expenses.

Certain Thrivent Advisor Network LLC advisors may also be registered representatives of a broker-dealer to offer securities products. Advisory Persons of Thrivent provide advisory services under a practice name or “doing business as” name or may have their own legal business entities. However, advisory services are engaged exclusively through 5280 Associates, a registered investment adviser. Please visit our website www.thriventadvisornetwork.com for important disclosures.

Securities offered through Purshe Kaplan Sterling Investments, Member FINRA/SIPC

Headquartered at 80 State Street, Albany, NY 12207.

Purshe Kaplan Sterling Investments and 5280 Associates are not affiliated companies.